



Workshop on
Regional approach to the implementation and
enforcement of Reg. (EC) 1099/2009
Bled, Slovenia 22-23 th March,2017

CROATIAN EXPERIENCE
(OUR EXPERIENCE)

*Control body - Veterinarska stanica Vrbovec
d.o.o.*

Mirela Juras, dr.med.vet.



- Conducts official controls including welfare at slaughter according to EC regulation 1099/2009
- 26 dr.med.vet. -authorized veterinarians
- including 3 specialists for certain fields
- Accreditation- 2010.y. Croatia Accreditation Agency
- SOP
- ante-mortem and post-mortem inspection (bovine, swine, poultry, sheep and goats);
- veterinary inspection and controls of entities dealing with food of animal origin (meat and meat products, milk and milk products, storages, eggs and egg products, apiculture products and veterinary control when issuing the certificates for live animals and animal products.



- Pik Vrbovec MI d.d.
- 5 slaughterhouses that slaughter poultry, cattle, pigs and sheep
- Comparing the large industry and small family facilities
-the business organization, requirements and opportunities that are put in front of them
.....concerning animal welfare as well, there are some major differences



- Begginings
 - Since early 1990s Pik Vrbovec MI
 - Pik Vrbovec MI -1995 production program for McDonald's fast food restaurant chain
 - soon after that started exporting to USA
 - USA inspections every 2-3y
 - facility already had some knowledge and was familiar with instructions, guidelines and keeping official records for example: instructions on how to properly and improperly do something, pictures



- a person who was responsible for the welfare from unloading to slaughter, although it was not to the extent as it is now, since Regulation 1099/2009 was implemented
- collection of instructions and guidelines
- Invented rustles to exclude from use electric stick in prosecution of livestock



- Control body
 - working instructions on animal welfare
 - describes in detail the way in which we perform the official control on welfare according to 1099/2009, our actions in different cases and also includes demands from the Regulation on the protection of animals during transport and related operations EC 1/2005



- working instructions and the applicable regulatory via internal training for all authorised veterinarians
- competent
- affinities for this kind of work
- highly motivated and if you manage to find such people they should be given additional training



- Developing our working instructions we're being helped by :
- - We have completed the course Animal welfare at slaughter and killing for disease control (E-learning Better Training for Safer Food on line course) is available at http://ec.europa.eu/chafea/food/training_courses.html
- Instructions from our ministry of Agriculture, available on their official website www.mps.hr
- -Professional trainings organized and held by the RSPCA -abattoir welfare assessment course www.awtraining.com



- -American directives on the welfare - Directive 609/86/EEC
HUMANE HANDLING AND SLAUGHTER OF LIVESTOCK, 8/15/
2011.-refers in particular to the official controls giving the
examples of situations and offering solutions to help in
work of official veterinarians;
- -the inspections of the competent authority in the field of
welfare
- -Animal welfare officer brochure www.ec.europa.eu
...



- check list consisting of 11 questions related to the control of welfare in slaughterhouses
- In addition to regularly checks (from the check list) of the handling and care of animals before they are being restrained, stunning, assessment of affective stunning, shackling or hoisting of live animals, bleeding, and slaughtering in accordance with regulation rules
- least 2 times a year a major welfare controls in meat industry
- The frequency of official controls is determined according to risk analysis conducted by our Ministry of Agriculture



9. PROVJERA POSTUPANJA SUKLADNO PROPISIMA O DOBROBITI ŽIVOTINJA

89	Osobe koje se brinu o životinjama tijekom njihovog kretanja, smještaja u depou, sputavanja, omamljivanja i klanja posjeduju potrebno profesionalno znanje, umijeće i sposobnost za obavljanje navedenih poslova	S	N	N/P	
90	Oprema za istovar životinja ima pod koji nije sklizak i bočnu zaštitu bez otvora				
91	Tijekom istovara, životinje su pošteđene uznemirenosti, straha, patnji i bolova				
92	Pri istovaru i premještanju životinja nije vršen pritisak na bilo koji osjetljivi dio tijela životinje				
93	Životinje koje neće biti zaklane odmah po dolasku smještavaju se u depoe u kojima su zaštićene od nepovoljnih vremenskih uvjeta				
94	Pribor i oprema za sputavanje, omamljivanje i usmrćivanje životinja je redovno održavana i provjeravana				
95	Na mjestu klanja postoji odgovarajuća pričuvna oprema i pribor koji su pravilno održavani i redovni provjeravani				
96	Životinje su pravilno sputane prije omamljivanja				
97	Životinje su pravilno omamljene prije iskrvarenja				
98	Životinje se pravilno iskrvaruju odmah nakon omamljivanja				
99	Životinje koje se omamljuju ili usmrćuju postavljene su u takav položaj da se opremom može lako rukovati i primijeniti je jednostavno, precizno i točno u određeno vrijeme				



- we have the opportunity to check:
 - the technical requirements for the facility according to the Regulation;
 - certificate of qualification for workers;
 - records of equipment maintenance;
 - plans for maintenance from authorized repairers;
 - talk to the person responsible for the welfare;



- -to review recent developments and plans for improving the SOP's;
 - talk to workers when performing certain procedures;
 - all required records kept, and compared with the actual situation etc...
-which requires a lot more than the prescribed 30-45 minutes



- The most common non-compliances:
- - inadequate construction equipment
- - human factor: the behavior of workers, most do not understand why is welfare important -
- especially small facilities -EDUCATION problem
- - no certificate of education;
- - not implemented internal training in terms of refreshing
- - frequent changes of workers;
- -do not carry out the verification procedures related to welfare
- -overcrowded pens



- - no water, frozen water
- - no bedding for calves and young animals
- - no functional sanitary box
- - no separation of weak or injured animals (no separation of animals with hernia, tail necroses, lameness or injured animals)
- - mixing different categories and groups of animals in pens
- - animal waiting and looking another animal being slaughtered,



- -floors, walls, fences... holes in the floor, open manholes, gratings, shadows, smells, steam and hydraulics, noise, manipulation of containers nearby, excessive use of electric sticks, rods, hooks, rails;
- - missing backup equipment on site
- - not performing the slaughter on the spot, on the truck when animal is injured
- -stunning pen inappropriate for the animal















2L

3L

4L

5L 6L 7L 8L



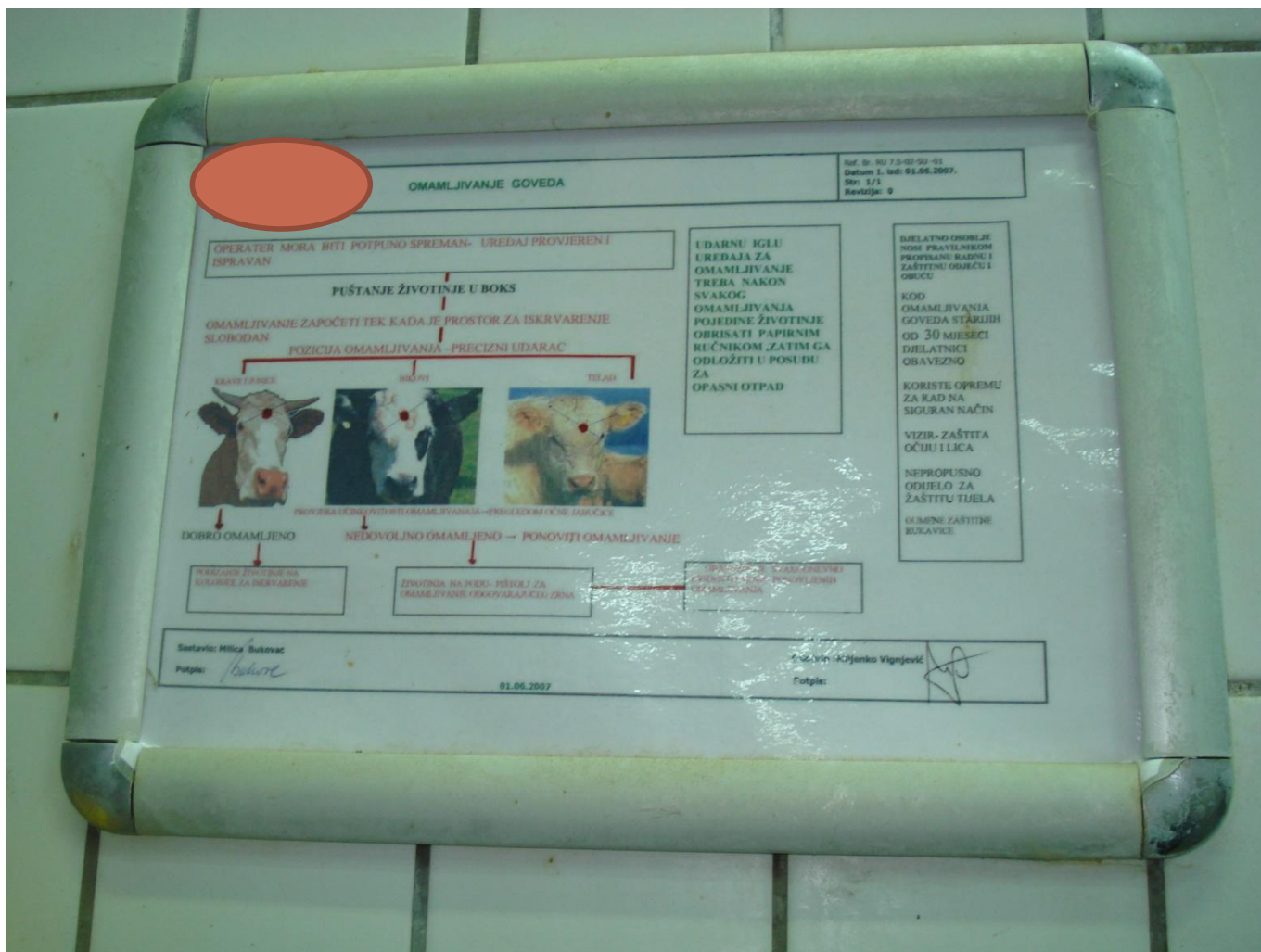












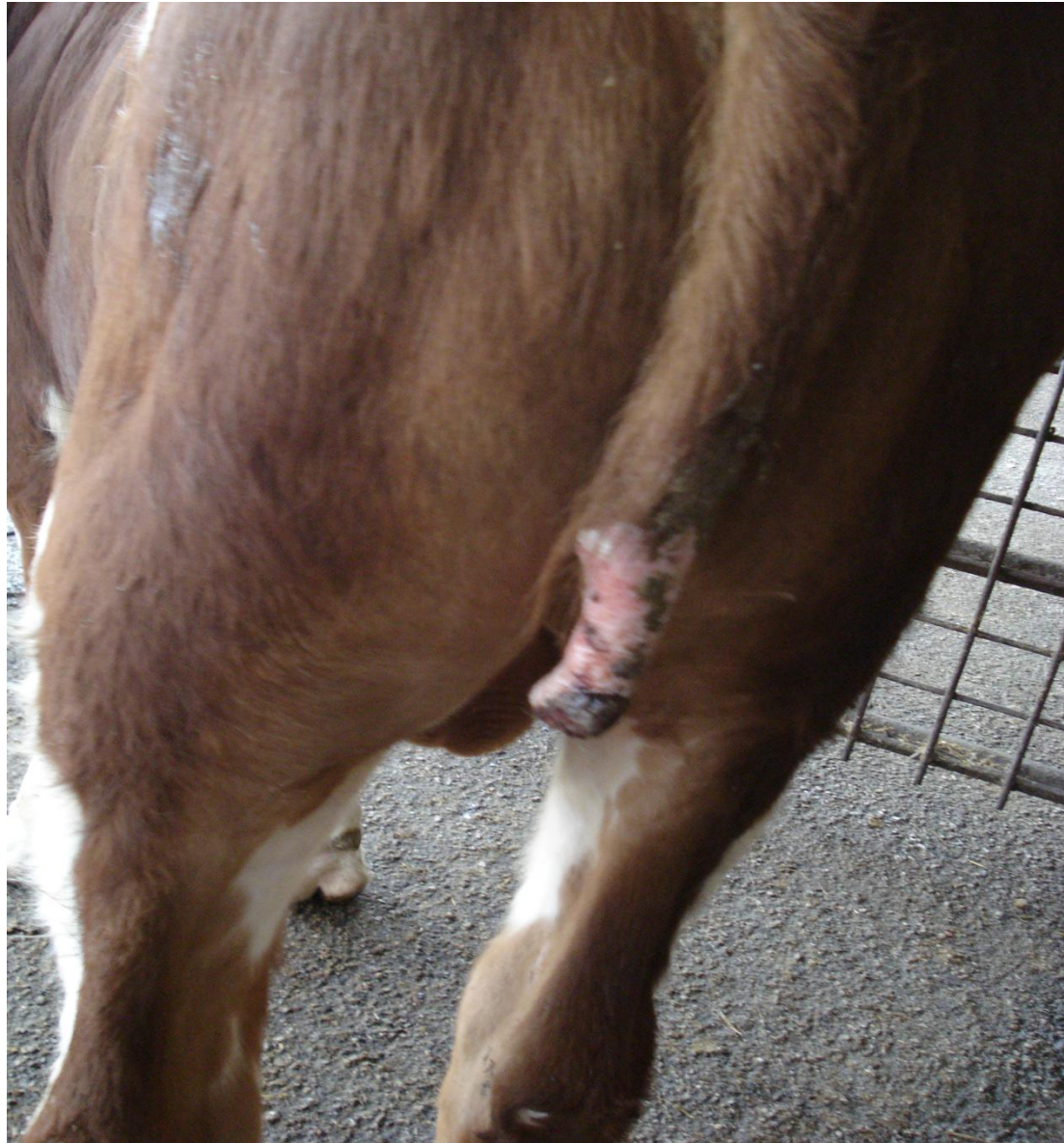




Owner, his goodfather and their first neighbour waiting for unload start...





















- Thank you!